

**CASE**  
CONSTRUCTION

# CXB HYDRAULIC EXCAVATORS

CX240B MH



# CXB HYDRAULIC EXCAVATORS

## CX240B MH

Case has a long established history at the forefront of the materials handling industry. Whatever the industry sector, Case machines offer the versatility, durability and performance to meet your needs.

With the introduction of the CX240B MH, Case has once again taken the lead in this vital industrial market.

### Power and performance

The EU Stage IIIA compliant engine in the CX240B offers proven low fuel consumption and reduced exhaust emissions. Dedicated matching of slew speed and boom raise functions increases productivity, while high lifting forces allow easier dump function with high lift arms.

### Quiet, comfortable working environment

Larger CX-B series cab offers class-leading visibility and comfort for the operator. The cab is mounted on a rigid parallel lift structure, that allows the visibility of the operator in a height of 5.06 meters.

### Safety first

Cab descent switch can be activated from inside and outside the cab, for increased operator safety. Safety valve limits cab descent speed and there is an escape ladder provided in case of emergency. Mechanical locking pins secure the cab in elevated position for service and maintenance.

### Increased productivity

Additional steps and handrails assist service engineers. Swing away cab front guard and forward step allow access to the windscreen. Centralised greasing points for the elevating cab structure, with secure tool storage beneath the cab.

### Purpose built

Standard 7.1 m boom and 5.0 m dipper arm provide superior reach and lifting capability. Heavier counterweight ensures maximum stability and auxiliary hydraulic lines allow rapid installation of rotating grapple.





# CXB HYDRAULIC EXCAVATORS

CX240B MH

## Precise control for maximum productivity

Experienced material handling operators know that power without control is power wasted. The CX240B MH shares its hydraulic system with the proven CX240B excavator. The hydraulic servo levers are tuned for fine control, providing the operator with maximum controllability in all conditions.

The dedicated slew frame, with its purpose-built elevating cab, provides a stable structure thanks to a rigid parallel linkage. With a range of elevating height settings, that allows the visibility of the operator in a height of 5.06 meters, the ideal operating position for any application is assured.

Dedicated boom and arm combinations, with hydraulic cylinders from a larger machine class, ensure high lifting forces and a wider working range, improving productivity for the customer. Arm cylinders mounted on the side of the boom increase the operating angle and improve transportation height, while twin cylinders boost lifting capacity.





## Clean, efficient power

The CX240B has at its heart a proven four cylinder Stage IIIA power plant. This highly efficient diesel engine uses common rail fuel injection and exhaust gas recirculation (EGR) to ensure low emissions and reduced fuel consumption.

The engine design features a sturdy engine block with a ladder frame construction, for increased durability and reliability, with a low rev cooling fan contributing to reduced noise levels.

# CXB HYDRAULIC EXCAVATORS

## CX240B MH



### Case durability and reliability

All CX-B series machines feature EMS Extended Maintenance System bushings, providing 1,000 hour greasing intervals on all pins except the attachment linkage. Anti-friction shims at the base of the boom limit friction and noise during operation, increasing reliability and reducing ownership costs.



### Proven driveline

All Case track components are designed for extended durability, proven in the most arduous working conditions across the world. Heat treated sprockets, improved track guides and increased pin hardness results in extended operating life.



### Hydraulic force

The CX240B MH features a hydraulic pump torque variable control system, to maintain optimum engine speed during heavy work. The engine and hydraulic control rapidly reacts to demand, while improvements in the hydraulic system contribute to reduced fuel consumption and improved performance.



### Commanding view

Dedicated elevating cab structure allows the visibility of the operator in a height of 5.06 meters. Rigid elevating structure ensures total operator confidence, allowing increased productivity at full reach. Cab can be lowered with an external control switch. Cab descent speed is also limited in the case of a hose burst.



### Maximum control

Fine tuned levers offer delicate control of boom and attachments. Swing relief pressure has been adjusted to match the boom raising speed, allowing smooth multifunction cycles for increased productivity.





#### **Efficient cooling pack**

The CX240B MH has a spacious radiator compartment, with separate cooling cores for engine coolant, hydraulic oil, cab air conditioning and the engine after cooler. Individual cores promote ease of maintenance and allow rapid cleaning for reduced downtime.

#### **Ease of service**

Centralised filter location within the left hand side of the bodywork allows access from ground level to all regular maintenance points. Green oil drains reduce environmental impact, ensuring that there is no ground contamination during regular service. A high flow refuelling pump is standard, while the machine features a 20% larger fuel tank, reducing downtime for daily refilling.

#### **Application specific**

With a 7.1 m main boom and 5.0 m dipper arm, the CX240B MH can handle the most arduous materials handling tasks. Available with dedicated scrap loading, materials handling and equipment.



# CXB HYDRAULIC EXCAVATORS

CX240B MH

## Class-leading working environment

With class-leading levels of low noise and vibration, the Case CX-B cab is spacious, light and comfortable. Thank's to slim pillars and a 60% larger window on the right hand side there is a excellent view into the jobsite. Maximum Safety.

A comfortable fully reclining operator's seat, standard air conditioning with nine outlet louvres to distribute heat and ventilation ensure that the driver remains comfortable throughout the working day. Cup holders, a clock, a mobile phone holder, a built-in coolbox and numerous storage compartments make the Case cab the ideal environment to ensure maximum productivity.

The cab is mounted on a 300% more rigid parallel lift structure, that allows the visibility of the operator in a height of 5.06 meters. There are emergency descent switches in the cab and at ground level, and the operator has a sturdy set of steps and handrails to gain safe access to the cab. Mechanical locking pins are supplied to retain the cab in the elevated position for service and maintenance.







## Service simplicity results in reduced downtime

As with all CX-B machines, the filters can be easily accessed from ground level, making the task easier and safer for service engineers. Green engine oil drain taps are supplied to ensure that there is no risk of contamination on sensitive ground.

The machine is equipped with a high flow electric refuelling pump with auto shut-off, which in combination with a larger fuel tank reduces the time taken to refill the tank. All electrical connections are located in a centralised sealed cabinet within the cab, ensuring that sensitive electronics are protected from dust and weather ingress.

The CX240B MH uses Extended Maintenance System (EMS) bushings on all pins except for the attachment linkage. EMS bushings allow 1,000 hour greasing intervals, with 250 hour intervals on the attachment pins. Anti-friction shims further reduce wear on the boom foot and head linkage, cutting noise and operating cost for the customer.

# CXB HYDRAULIC EXCAVATORS

CX240B MH

## Specifications

### Engine

Make \_\_\_\_\_ ISUZU  
Type \_\_\_\_\_ AH-4HK1X  
Water-cooled, 4-cycle diesel, 4-cylinder in line, direct injection,  
(electric control) Turbocharger with air cooled intercooler  
Number of cylinders \_\_\_\_\_ 5  
Bore/Stroke \_\_\_\_\_ 115 x 125 mm  
Horsepower (SAE J1349) \_\_\_\_\_ 177 hp (132 kW) @ 2000 rpm  
Maximum torque (SAE J1349) \_\_\_\_\_ 636 Nm @ 1500 rpm

### Hydraulic system

Max output \_\_\_\_\_ 2 x 234 l/min @ 2000 rpm  
2 variable displacement axial piston pumps with regulating system  
Attachment \_\_\_\_\_ 34.3 MPa - 36.5 MPa with auto power up  
Swing circuit \_\_\_\_\_ 28.9 MPa  
Travel \_\_\_\_\_ 34.3 Mpa

### Swing

Max upperstructure swing speed \_\_\_\_\_ 10.7 rpm

### Travel

Travel motor \_\_\_\_\_ Variable displacement axial piston motor  
Max travel speed \_\_\_\_\_ 5.5 km/h (Automatic travel speed shifting)  
Low travel speed \_\_\_\_\_ 3.5 km/h  
Gradeability \_\_\_\_\_ 70% (35°)  
Drawbar pull \_\_\_\_\_ 216 kN

### Electrical system

Circuit \_\_\_\_\_ 24 V  
Alternator \_\_\_\_\_ 50 Amp

### Undercarriage

Number of carriers rollers (each side) \_\_\_\_\_ 2  
Number of track rollers (each side) \_\_\_\_\_ 9  
Number of shoes each side \_\_\_\_\_ 51  
Type of shoe \_\_\_\_\_ Triple grouser shoe

### Circuit and component capacities

Fuel tank \_\_\_\_\_ 410 l  
Hydraulic system \_\_\_\_\_ 250 l  
Engine cooling system \_\_\_\_\_ 25.2 l

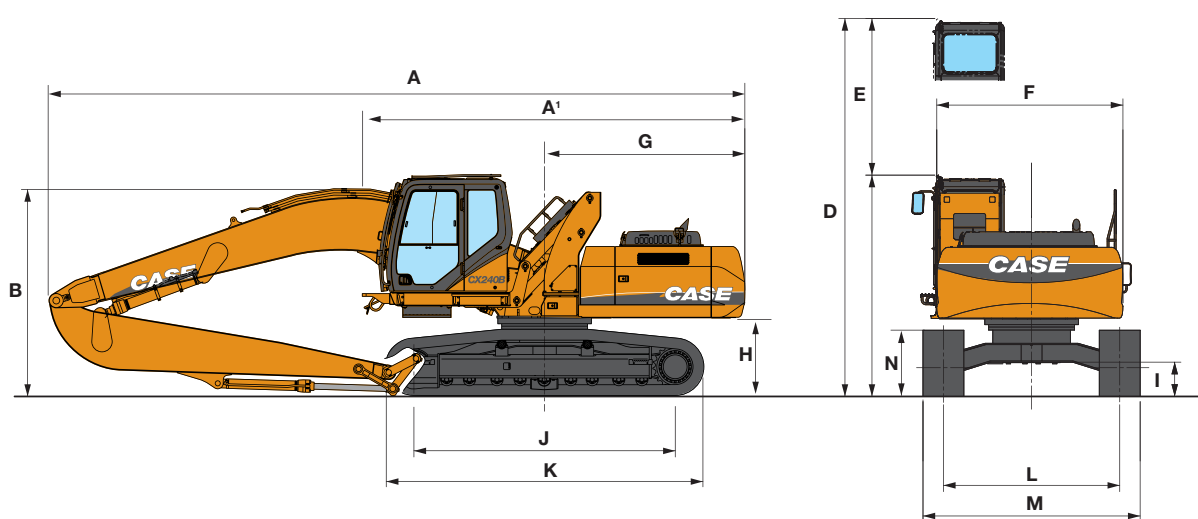
## Weight and ground pressure

With 5.00 m Arm, operator, lubricant, coolant and full fuel tank

	Weight (kg)	Ground pressure (MPa)
600 mm grouser shoe	27800	0.055

## General dimensions

With 5.0 m standard boom



### Arm 5.0 m

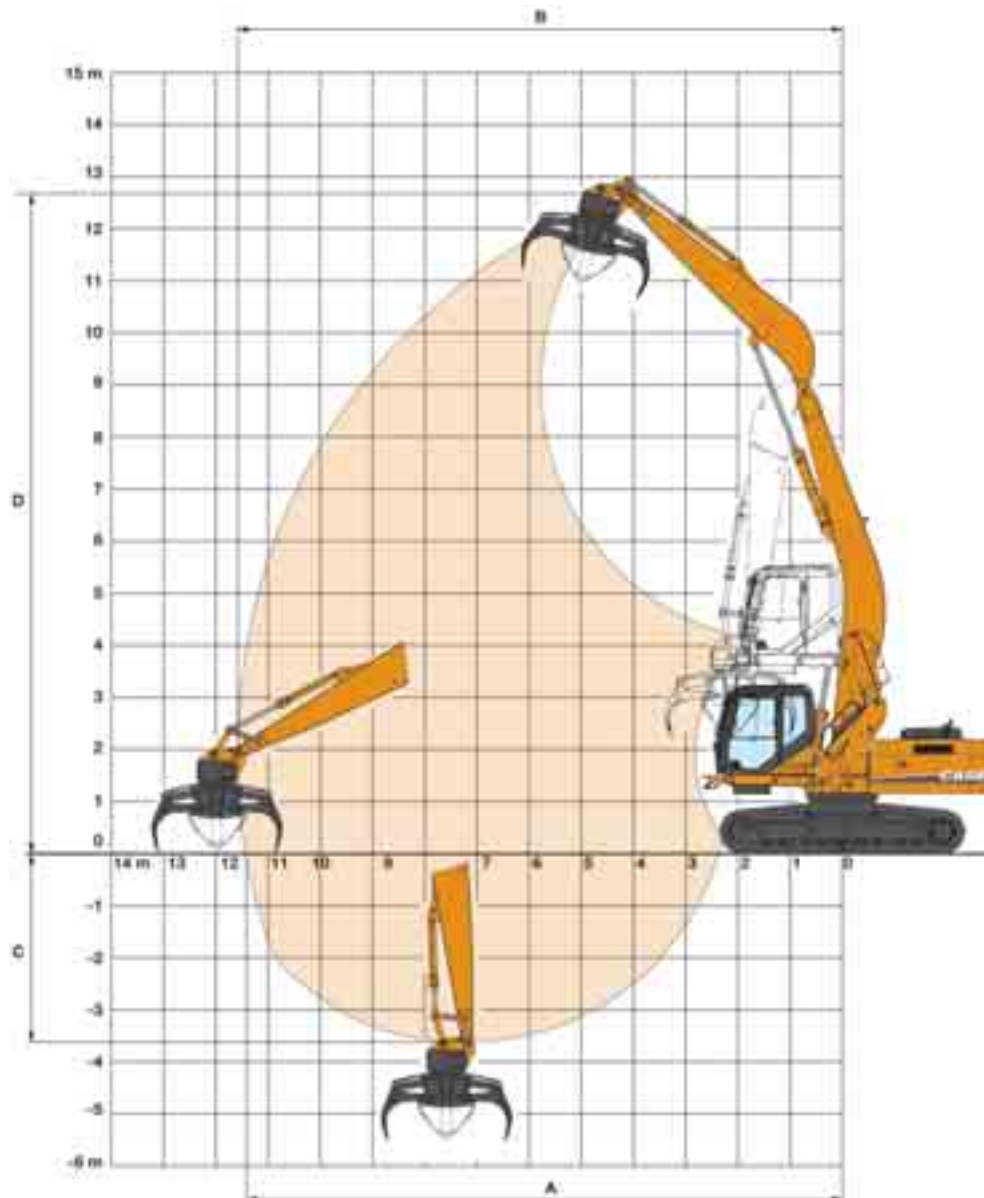
A <sup>1</sup>	Overall length (without attachment)	5580 mm
A	Overall length (with attachment)	10230 mm
B	Overall height (with attachment)	3230 mm
C	Minimum cab height	3230 mm
D	Maximum cab height	5530 mm
E	Cab riser stroke	2300 mm
F	Upper structure overall width	2820 mm
G	Swing (rear end) radius	2490 mm
H	Counterweight ground clearance	1100 mm
I	Minimum ground clearance	460 mm
J	Wheel base (Center to center of wheels)	3840 mm
K	Crawler overall length	4650 mm
L	Track gauge	2590 mm
M	Undercarriage overall width (with 600 mm shoes)	3190 mm
N	Crawler tracks height	940 mm

# CXB HYDRAULIC EXCAVATORS

CX240B MH

## Performance data

With 5.0 m standard boom



**Arm 5.0 m**

Boom length	7100 mm
A Maximum reach at GRP	11420 mm
B Maximum reach	11580 mm
C Maximum depth	3660 mm
D Maximum height	12630 mm

# Lifting capacity

Front 360°	REACH									
	2.0 m	3.0 m	4.0 m	5.0 m	6.0 m	7.0 m	8.0 m	9.0 m	10.0 m	11.0 m

## 5.0 arm length, 700G shoes

12.0 m						7597*	7597*													
11.0 m								7044*	7044*	5946*	5946*									
10.0 m								6727*	6727*	6436*	6436*	5962*	5601							
9.0 m								6618*	6618*	6310*	6310*	6069*	5668	5440*	4612					
8.0 m								6684*	6684*	6335*	6335*	6046*	5668	5816*	4643					
7.0 m								6914*	6914*	6487*	6487*	6132*	5620	5840*	4623	5463	3847			
6.0 m						7997*	7997*	7304*	7304*	6752*	6752*	6305*	5532	5940*	4569	5438	3824			
5.0 m				10128*	10128*	8795*	8795*	7835*	7835*	7112*	6665	6547*	5411	6094*	4487	5385	3774	4598	3198	
4.0 m	21815*	21815*	15057*	15057*	11749*	11749*	9781*	9781*	8473*	8152	7537*	6454	6834*	5266	6272	4387	5314	3708	4559	3162
3.0 m			18561*	18561*	13548*	13548*	10845*	1022	69151*	7804	7988*	6222	7138*	5106	6152	4276	5233	3632	4510	3115
2.0 m			5443*	5443*	5126*	13440	1817*	9676	9785*	7457	8414*	5990	7189	4945	6030	4162	5149	3553	4456	3064
1.0 m			4125*	4125*	9931*	9931*	12536*	9213	10288*	7149	8551	5777	7026	4794	5915	4055	5069	3478	4404	3016
0 m			4431*	4431*	8204*	8204*	12906*	8876	10508	8690	5835	5559	9688	5466	5581	4396	5000	3413	4361	2974
-1.0 m			5152*	5152*	8013*	8013*	12914*	8662	10311	6731	8206	5464	6774	4563	5735	3888	4946	3362	4331	2947
-2.0 m					8356*	8356*	12576*	8548	10190	6623	8107	5375	6699	4494	5681	3838	4913	3332		
-3.0 m							11903*	8511	10033*	6575	8057	5330	6660	4459	5657	3815				

## 5.0 arm length, 600G shoes

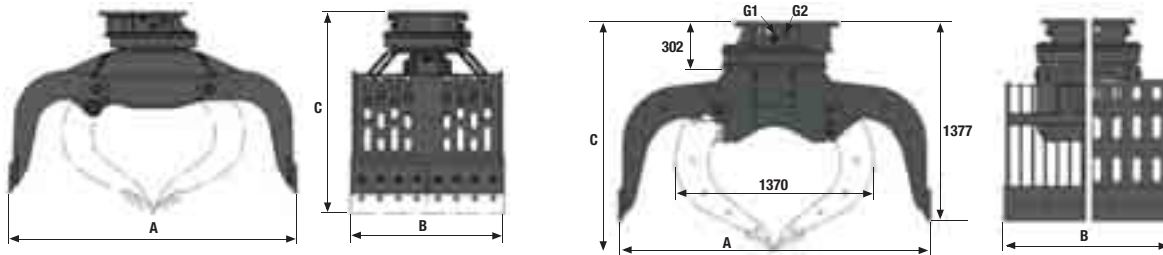
12.0 m						7597*	7597*													
11.0 m								7044*	7044*	5946*	5946*									
10.0 m								6727*	6727*	6436*	6436*	5962*	5553							
9.0 m								6618*	6618*	6310*	6310*	6069*	5620	5440*	4571					
8.0 m								6684*	6684*	6335*	6335*	6046*	5620	5816*	4602					
7.0 m								6914*	6914*	6487*	6487*	6132*	5572	5840*	4582	5409	3811			
6.0 m						7997*	7997*	7304*	7304*	6752*	6752*	6305*	5484	5940*	4527	5383	3787			
5.0 m				10128*	10128*	8795*	8795*	7835*	7835*	7112*	6608	6547*	5363	6094*	4446	5331	3737	4549	3166	
4.0 m	21815*	21815*	15057*	15057*	11749*	11749*	9781*	9781*	8473*	8084	7537*	6397	6834*	5218	6210	4345	5260	3671	4511	3129
3.0 m			18561*	18561*	13548*	13548*	10845*	10139	9151*	7735	7988*	6166	7138*	5058	6090	4234	5179	3595	4461	3082
2.0 m			5443*	5443*	5126*	13320	11817*	9588	9785*	7389	8414*	5933	7117	4897	5968	4121	5095	3516	4407	3031
1.0 m			4125*	4125*	9931*	9931*	12536*	9125	10288*	7081	8465	5721	6953	4747	5853	4013	5015	3441	4356	2983
0 m			4431*	4431*	8204*	8204*	12906*	8789	10401	6836	8268	5543	6812	4617	5752	3920	4945	3376	4312	2942
-1.0 m			5152*	5152*	8013*	8013*	12914*	8575	10204	6662	8119	5408	6702	4516	5673	3846	4891	3326	4283	2914
-2.0 m					8356*	8356*	12576*	8460	10082	6555	8021	5319	6626	4446	5619	3796	4859	3295		
-3.0 m							11903*	8423	10028	6507	7971	5274	6588	4411	5595	3774				

\* Hydraulic capacity 87%

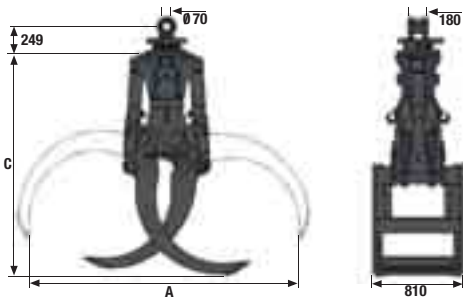
# CXB HYDRAULIC EXCAVATORS

CX240B MH

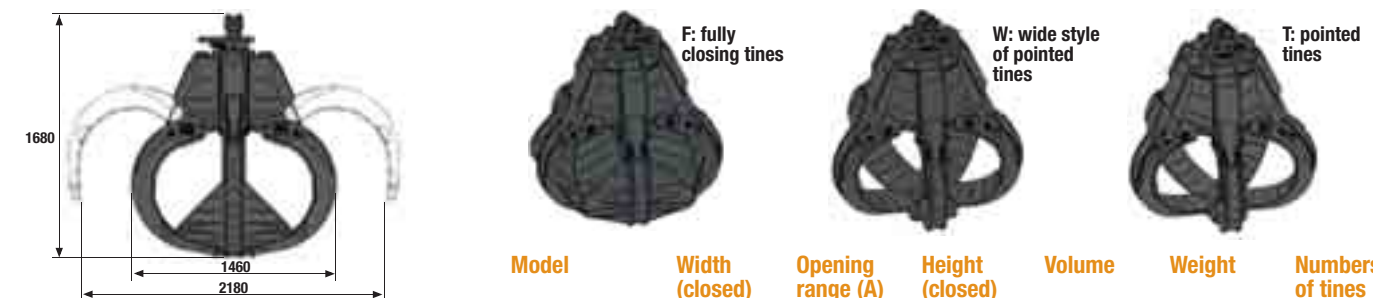
## Material handling attachments



	Model	Width (B)	Opening range (A)	Height (C)	Volume	Weight	Closing force
Demolition & sorting grab (metal ribs)	D27H-115	1150 mm	2142 mm	1515 mm	800 l	1610 kg	63 kN
Demolition & sorting grab	D27H-P-115	1150 mm	2142 mm	1515 mm	800 l	1515 kg	63 kN
HD- demolition & sorting grab	D24H-P-100HD	1000 mm	1992 mm	1456 mm	570 l	1315 kg	56 kN



	Model	Width (B)	Opening range (A)	Height (C)	Volume	Weight	Closing force
Timber grab	T25V-0.80	810 mm	2100 mm	2090 mm	0.80 m <sup>2</sup>	1225 kg	42 kN
	T25V-1.00	810 mm	2250 mm	2155 mm	1.00 m <sup>2</sup>	1235 kg	39 kN
	T25V-1.25	810 mm	2420 mm	2245 mm	1.25 m <sup>2</sup>	1265 kg	36 kN
	T25V-1.50	810 mm	2780 mm	2405 mm	1.50 m <sup>2</sup>	1340 kg	32 kN



	Model	Width (closed)	Opening range (A)	Height (closed)	Volume	Weight	Numbers of tines
Orange Peel Grab 4 and 5 tines (550 l)	P25V-550-4-F	1460 mm	2180 mm	1680 mm	550 l	1320 kg	4
	P25V-550-4-H	1460 mm	2180 mm	1680 mm	550 l	1130 kg	4
	P25V-550-4-W	1460 mm	2180 mm	1680 mm	550 l	1025 kg	4
	P25V-550-4-T	1460 mm	2180 mm	1680 mm	550 l	1000 kg	4
	P25V-550-5-F	1460 mm	2180 mm	1680 mm	550 l	1460 kg	5
	P25V-550-5-H	1460 mm	2180 mm	1680 mm	550 l	1300 kg	5
	P25V-550-5-W	1460 mm	2180 mm	1680 mm	550 l	1225 kg	5
	P25V-550-5-T	1460 mm	2180 mm	1680 mm	550 l	1200 kg	5
Orange Peel Grab 5 tines (600 l)	P36V-600-5-H	1440 mm	2220 mm	2075 mm	600 l	1665 kg	5
	P36V-600-5-W	1440 mm	2220 mm	2075 mm	600 l	1595 kg	5
Orange Peel Grab 6 tines (800 l)	P35V-800-5-T	1440 mm	2220 mm	2075 mm	600 l	1560 kg	5
	P35V-800-6-W	1480 mm	2250 mm	1820 mm	800 m <sup>2</sup>	1555 kg	6
	P35V-800-6-T	1480 mm	2250 mm	1820 mm	800 m <sup>2</sup>	1505 kg	6

## You can count on Case

You can count on Case and your Case dealer for full-service solutions-productive equipment, expert advice, flexible financing, genuine Case parts and fast service. We're here to provide you with the ultimate ownership experience.

### Case pride

You can take pride in the Case name on your machine. It's backed by more than a century of productivity and performance. Case and your Case dealer are here for you, not only when you buy the machine, but also after you put 1,000 or 10,000 hours on it.

### A rich, proud history

Case Construction Equipment's heritage spans more than 165 years. Growing from J.I. Case's innovations with steam-powered machinery in the late 1800s, Case developed road-building equipment that helped create early 20th century streets and highways across the world. By 1912, Case was well on its way to establishing itself as a full-line equipment manufacturer. The company continued to expand its construction equipment business over the next 45 years.

### Celebrating a tradition of innovation

In 1957, Case produced the world's first integrated loader/backhoe made and warranted by one manufacturer. Over the decades and into the 21st century, Case has continued to develop a long line of industry firsts and has taken a leadership role in pioneering new products and solutions. Today, Case produces 15 lines of equipment and more than 90 models to meet your toughest construction challenges. Supported by manufacturing and sales in more than 150 countries, Case serves the needs of our customers worldwide.

### Customer support

Case equipment is sold and serviced by more than 370 dealers and 900 outlets worldwide. No matter where you work, we're here to support and protect your investment.

To locate a Case dealer or learn more about Case equipment or customer service, go to [www.casece.com](http://www.casece.com). For flexible financing options, dependable parts and fast service, your Case dealer is here to meet your needs.

It all adds up. You can count on Case.

## Case Delivers Full-Service Solutions

**EQUIPMENT | FINANCING | PARTS & SERVICE**



# Standard equipment

## ENGINE CONTROL

Isuzu Tier III Engine EU stage IIIA  
Electronic control of the injection system  
Automatic engine pre-heating  
Automatic/manual engine return to idle  
Exhaust Gas Recirculator  
Emergency stop  
Electrical refuel pump with automatic stop  
Fuel filter with water separator

## HYDRAULIC CONTROL

Auto / Heavy / Super Power working modes  
Pump torque variable control  
Automatic Power boost control  
Boom priority  
Swing brake control  
High performance "Super Fine" synthetic fiber hydraulic filter (high contamination catch)  
2 travel speeds with auto down shifting  
Double acting auxiliary circuit for grapple on boom and dipper  
Low flow circuit for rotating on boom and dipper  
HBCV w/ alarm device on boom cylinders

## OPERATOR ENVIRONMENT

2.3 m hydraulic elevating high rigidity cab system with safety glass  
Strengthened main frame & HD under covers.  
Extra safety steps & emergency ladder on rear  
Adjustable and retractable armrest console with position memory  
Safety lever  
Self adjusting Air conditioning and heating system

Cup holder  
High visibility side monitor display with automatic brightness  
Messages (function, temperature, safety, ...) on the display  
Integrated diagnostic system  
Working modes (Auto/Heavy/Super Power) combined with engine throttle  
Anti-theft device  
Hourmeter  
Selectable auxiliary hydraulic flow pre-settings  
RH front console with clock and cell phone holder  
High capacity shock absorbers on cab with 4 points mountings  
Rain deflector  
Windscreen with lockable opening  
Windscreen washer and wiper  
Removable lower front windscreen with storage location in cab  
Glass cab roof window and sliding sun shade  
ISO control pattern low effort & short joysticks  
Adjustable sun visor  
Washable cab floor mat  
Rear view mirror and safety mirrors  
Storage compartments  
Integrated cool box  
12 V and 24 V DC accessory sockets

## OPERATOR SEAT

Fully adjustable low frequency mechanical suspension seat including double acting

hydraulic damper  
Weight adjustment  
Height / fore & aft adjustment  
Adjustable head rest  
Adjustable seat back angle with fully flat seat reclining  
Adjustable arm rest  
Safety belt

## ELECTRICAL SYSTEM

Water proof connectors  
Double horn  
Working light on the cab  
Working light on upperstructure  
Working light on the boom

## UNDERCARRIAGE

600 mm track width  
Sealed and long life lubricated tracks

## EQUIPMENT

Heavy Counterweight  
7.1 m long boom with dual cylinders  
5 m extra long material handling stick  
EMS (Extended Maintenance System) pins and bushings as Standard  
1000 hours lubrication interval for all, except buckets pins at 250 hours)  
Low friction resin side shims on boom and dipper

# Options

600 mm flat shoe tracks  
700 mm ground shoe tracks  
Triple piece track guides  
FOPS level 2 cab guard

Front screen guard (mesh type)  
Front screen guard OPG level 1  
Front screen guard OPG level 2  
Height limitation system

GPS (Global Positioning System) by satellite  
Centralized greasing system automatically actuated by an electrical grease pump

*Standard and optional equipment shown can vary by country.*

## Worldwide Case Construction Equipment Contact Information

### EUROPE/AFRICA/MIDDLE EAST:

Centre D'affaires EGB  
5, Avenue Georges Bataille - BP 40401  
60671 Le Plessis-Belleville - FRANCE

### NORTH AMERICA/MEXICO:

700 State Street  
Racine, WI 53404 U.S.A.

### LATIN AMERICA:

Av. General David Sarnoff 2237  
32210 - 900 Contagem - MG  
Belo Horizonte BRAZIL

### ASIA PACIFIC:

Unit 1 - 1 Foundation Place - Prospect  
New South Wales - 2148 AUSTRALIA

### CHINA:

No. 29, Industrial Premises, No. 376,  
De Bao Road, Waigaoqiao Ftz, Pudong,  
SHANGHAI, 200131, P.R.C.

## CASE Construction Equipment

CNH UK Ltd  
Unit 4,  
Hayfield Lane Business Park,  
Field Lane, Auckley,  
Doncaster,  
DN9 3FL  
Tel. 00800-2273-7373  
Fax +44 1302 802829

**CASE** Customer Assistance  
**00800-2273-7373**

The call is free from a land line. Check in advance with your Mobile Operator if you will be charged.



NOTE: Standard and optional fittings can vary according to the demands and specific regulations of each country. The illustrations may include optional rather than standard fittings - consult your Case dealer. Furthermore, CNH reserves the right to modify machine specifications without incurring any obligation relating to such changes.

Conforms to directive 98/37/CE

