



Specifications

Engine

Model _____ Tier 4 interim certified ISUZU AM-4JJ1X
 Type _____ Water-cooled, 4-cycle diesel, 4-cylinder in line,
 High pressure common rail system (electric control), Turbocharger
 with air cooled intercooler, DPD system
 Number of cylinders _____ 4
 Bore/Stroke _____ 95.4 x 104.9 mm
 Horsepower SAE J1349 NET _____ 92.2 kW at 2.200 min⁻¹
 Maximum torque SAE J1349 NET _____ 391 Nm at 1.800 min⁻¹

Hydraulic system

Max oil flow _____ 2 x142 l/min @ 2.200 min⁻¹
 2 variable displacement axial piston pumps with regulating system
 Working circuit pressure _____
 Boom/Arm/Bucket _____ 34.3 MPa
 Boom/Arm/Bucket (with auto power up) _____ 36.3 MPa
 Swing circuit _____ 27.9 MPa
 Travel _____ 34.3 Mpa

Swing

Maximum swing speed _____ 11.5 min⁻¹

Travel

Travel motor _____ Variable displacement axial piston motor
 Max travel speed _____ 5.4 km/h (Automatic travel speed shifting)
 Low travel speed _____ 2.8 km/h
 Gradeability _____ 70% (35°)
 Drawbar pull _____ 161 kN

Electrical system

Alternator _____ 50 Amp

Undercarriage

Number of carriers rollers (each side) _____ 2
 Number of track rollers (each side) _____ 7
 Number of shoes (each side) _____ 44
 Type of shoe _____ Triple grouser shoe

Capacities

Fuel tank _____ 300 l
 Hydraulic system _____ 165 l
 Cooling system _____ 16.2 l

Weight and ground pressure

With 2.60 m Arm , 0.62 m³ bucket, operator, lubricant, coolant, full fuel tank

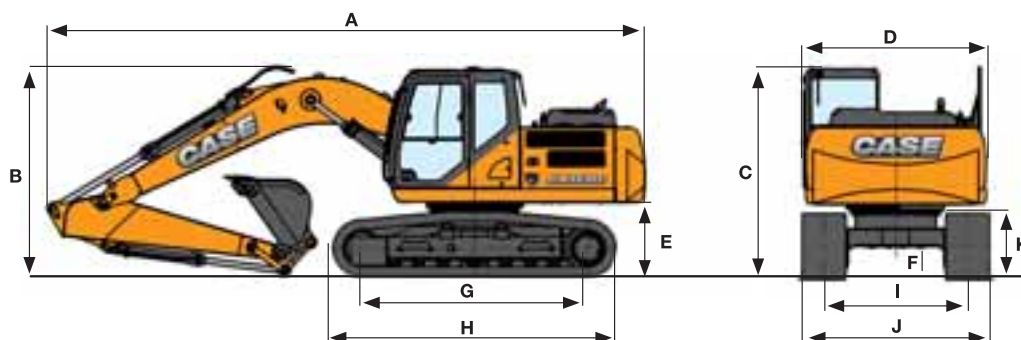
	Weight (kg)	Ground pressure (MPa)
600 mm grouser shoe	17.200	0.040

CX C-SERIES HYDRAULIC EXCAVATORS

CX160C

TIER 4 INTERIM

General dimensions



	Arm 2.20 m	Arm 2.60 m	Arm 3.00 m
Overall length (without attachment)	4410 mm	4410 mm	4410 mm
A Overall length (with attachment)	8470 mm	8440 mm	8500 mm
B Overall height (with attachment)	3050 mm	3050 mm	3150 mm
C Cab height	3050 mm	3050 mm	3050 mm
D Upper structure overall width	2540 mm	2540 mm	2540 mm
Swing (rear end) radius	2450 mm	2450 mm	2450 mm
E Clearance height under upper structure	1020 mm	1020 mm	1020 mm
F Minimum ground clearance	440 mm	440 mm	440 mm
G Wheel base (Center to center of wheels)	3190 mm	3190 mm	3190 mm
H Crawler overall length	3990 mm	3990 mm	3990 mm
I Track gauge	1990 mm	1990 mm	1990 mm
J Undercarriage overall width (with 600 mm shoes)	2590 mm	2590 mm	2590 mm
K Crawler tracks height	920 mm	920 mm	920 mm

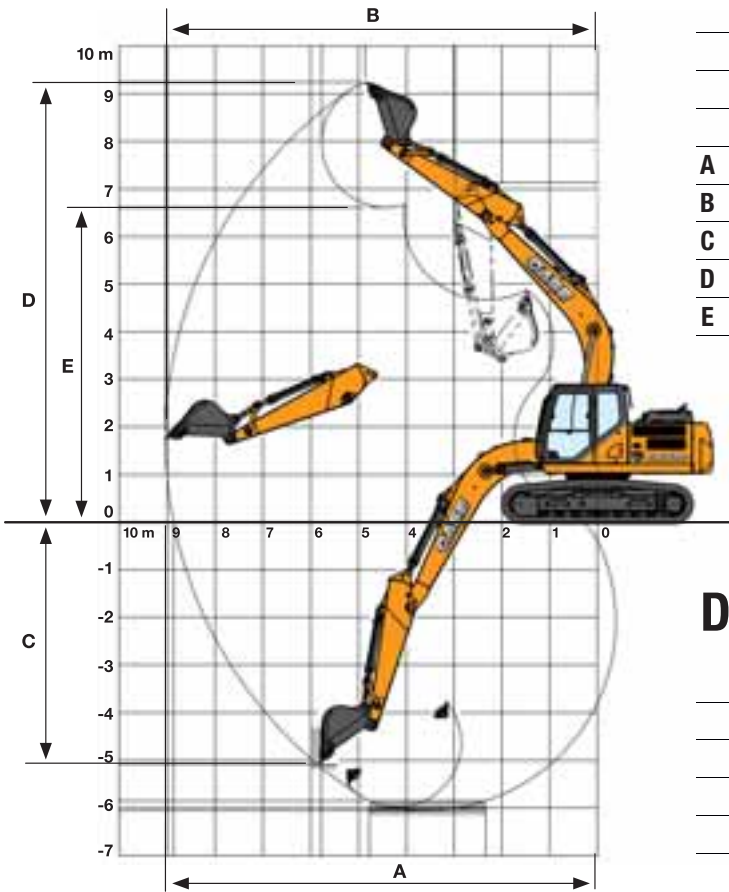
Lifting capacity

Front 360°	REACH						
	1.5 m	3.0 m	4.5 m	6.0 m	7.5 m	9.0 m	At max reach

Standard arm. 2.60 m arm length, 0.62 m³ bucket, 600G LC shoes, max reach 9.04 m

7.5 m						2600 *	2600 *					1610*	1610*	6.52
6.0 m						3240 *	3240 *	2020 *	2020*			1460*	1460*	7.68
4.5 m						4250 *	3110	3200 *	2070			1420*	1420*	8.35
3.0 m			8530 *	8530 *	6170*	4670	4690	2920	3220	1980		1450*	1450*	8.68
1.5 m			8890 *	7840	7170	4250	4470	2720	3100	1880		1540*	1420	8.7
0 m			7510 *	7220	6810	3950	4290	2560	3010	1790		1710*	1470	8.44
-1.5 m	6040 *	6040*	9640 *	7340	6670	3840	4200	2490	2990	1770		2030*	1640	7.88
-3.0 m	8590 *	8590*	12880 *	7470	6720	3900	4250	2540				2680*	2020	6.96
-4.5 m	12540 *	12540*	10500 *	7770	6820	4210						4420*	2950	5.52

Performance data



	Arm 2.20 m	Arm 2.60 m	Arm 3.00 m
Boom length	5150 mm	5150 mm	5150 mm
Bucket radius	1350 mm	1350 mm	1350 mm
Bucket wrist action	178 °	178 °	178 °
A Maximum reach at GRP	8500 mm	8870 mm	9220 mm
B Maximum reach	8670 mm	9040 mm	9380 mm
C Max. digging depth	5660 mm	6060 mm	6490 mm
D Max. digging height	9010 mm	9240 mm	9290 mm
E Max. dumping height	6380 mm	6610 mm	6690 mm

Digging force With 0.62 m³ bucket (ISO 6015)

	Arm 2.20 m	Arm 2.60 m	Arm 3.00 m
Arm digging force	90 kN	79 kN	72 kN
- with auto power boost	95 kN	84 kN	77 kN
Bucket digging force	112 kN	112 kN	112 kN
- with auto power boost	118 kN	118 kN	118 kN

Lifting capacity

Front 360°	REACH						
	1.5 m	3.0 m	4.5 m	6.0 m	7.5 m	9.0 m	At max reach m

Short arm. 2.20 m arm length, 0.62 m³ bucket, 600G LC shoes, max reach 8.67 m

7.5 m												2130*	2130*	5.98			
6.0 m							3780*	3200							1940*	1940*	7.25
4.5 m																	
3.0 m																	
1.5 m																	
0 m																	
-1.5 m																	
-3.0 m																	
-4.5 m																	

Long arm. 3.00 m arm length, 0.51 m³ bucket, 600G LC shoes, max reach 9.38 m

7.5 m																	
6.0 m																	
4.5 m																	
3.0 m																	
1.5 m																	
0 m																	
-1.5 m																	
-3.0 m																	
-4.5 m																	

* Hydraulic capacity 87%

Standard Equipment

<p>ENGINE Isuzu 4-cylinder turbodiesel in line Certified Tier 4 interim / EU stage 3b Electronic fuel injection High pressure common rail system Variable geometry turbo charger Exhaust gas recirculation Diesel Particulate Diffuser (DPD) Neutral safety start Auto-engine warm up, emergency stop Glow-plug pre-heat Idle System: Auto-idle One-touch idle Idle shut-down EPF (Engine Protection Feature) Dual-stage fuel filtration Dual element airfilter Remote oil filter Green plug oil drain 500-hour engine oil change interval Refuelling Pump</p> <p>HYDRAULICS Auto power boost Auto swing priority</p>	<p>Auto travel speed change Selectable work modes Overload warning device SWC - SWING RELIEF CONTROL SSC - SPOOL STROKE CONTROL BEC - BOOM ECONOMY CONTROL AEC - AUTO ECONOMY CONTROL SEC - SWING ECONOMY CONTROL ISO pattern controls Pre-set auxiliary pump settings Switch controlled auxiliary selection Auxiliary valve Auxiliary pipe brackets 5,000 hour hydraulic oil change interval 1,000 hour hydraulic filter change interval Hydraulic track adjustment SAHR brake</p> <p>UPPERSTRUCTURE Isolation mounted cab (fluid and spring) Common key vandal locks Swivel guard belly pan Rear view safety camera</p> <p>ATTACHMENT Standard monoboam 5.15 m</p>	<p>Arm 2.60 m Bucket linkage with hook Boom mounted work light (70 watt) Auxiliary pipe brackets Centralized lube bank Attachment cushion valve Arm and boom regeneration Arm and boom hose burst check valves</p> <p>OPERATOR STATION ROPS/FOPS level 1 cab FOPS guard OPG level II on cab roof Pressurized cab Tempered safety glass One-touch lock front window Sun visor & rain deflector AC/heat/defrost w/ auto climate control Hot & coolbox, cup holder & ashtray Interior dome light Cloth covered air-suspension seat Seat-belt Adjustable armrests Tilting consoles - 4-position Low-effort controls (short) Sliding cockpit (180 mm)</p>	<p>Controls pre-wired for auxiliary Auxiliary select system Straight travel Aux-in port for personal electronics Multifunction color monitor Rear-view camera Anti-theft system (start code system) Rubber floor mat 12-volt electric socket 24-volt cigarette lighter One-piece right hand window 2 internal & 3 external view mirrors 2 working lights (boom & upperstructure) 2 cab top working lights Windshield wiper / washer Clear (Lexan) roof window w/ sunshade Storage compartments On-board diagnostic system Travel alarm with cancel switch</p> <p>UNDERCARRIAGE 600 mm steel shoes, triple semigrouser Full overlap turntable bearing tub Single track guide</p>
--	---	---	---

Options

<p>HYDRAULICS Auxiliary Hydraulics - Single acting pedal activated breaker circuit Pedal-activated multifunction circuit Pedal activated low-flow circuit</p> <p>ATTACHMENT Arm - 2.20 m / 3 m Hydr. or mech quickcoupler</p>	<p>Buckets: Extreme / Heavy duty / GP/ ditching Hammers, shears, grapples</p> <p>OPERATOR STATION Front cab guard - vertical bars (OPG level 2) Front cab guard - vertical bars (OPG level 1) Front mesh screen AM/FM radio w/ antenna and</p>	<p>2-speakers Side-view camera</p> <p>UPPERSTRUCTURE Auto centralized greasing system Rubber bumper guard (order through Service Parts)</p> <p>UNDERCARRIAGE Steel shoes, triple semi-grouser 500mm, 700mm</p>	<p>Rubber link chain 500mm Triple track guide</p>
---	--	---	--

Standard and optional equipment shown can vary by country.

Worldwide Case Construction Equipment Contact Information

- EUROPE:**
 via Plava, 80
 10135 TORINO - ITALIA
- AFRICA/MIDDLE EAST/CIS:**
 Riva Paradiso 14
 6902 Paradiso - SWITZERLAND
- NORTH AMERICA/MEXICO:**
 700 State Street
 Racine, WI 53404 U.S.A.
- LATIN AMERICA:**
 Av. General David Sarnoff 2237
 32210 - 900 Contagem - MG
 Belo Horizonte BRAZIL
- ASIA PACIFIC:**
 Unit 1 - 1 Foundation Place - Prospect
 New South Wales - 2148 AUSTRALIA
- CHINA:**
 No. 29, Industrial Premises, No. 376.
 De Bao Road, Waigaoqiao Ftz, Pudong,
 SHANGHAI, 200131, P.R.C.

CASE Construction Equipment
 CNH UK Ltd
 Unit 4, Hayfield Lane Business Park,
 Field Lane, Auckley,
 Doncaster, DN9 3FL
 Tel. 00800-2273-7373
 Fax +44 1302 802829



CASE Customer Assistance
00800-2273-7373

The call is free from a land line. Check in advance with your Mobile Operator if you will be charged.



NOTE: Standard and optional fittings can vary according to the demands and specific regulations of each country. The illustrations may include optional rather than standard fittings - consult your Case dealer. Furthermore, CNH reserves the right to modify machine specifications without incurring any obligation relating to such changes.

Conforms to directive 2006/42/CE

