



Specifications

Engine

Model _____ Tier 4 interim certified ISUZU AM-4JJ1X
 Type _____ Water-cooled, 4-cycle diesel, 4-cylinder in line,
 High pressure common rail system (electric control), Turbocharger
 with air cooled intercooler, DPD system
 Number of cylinders _____ 4
 Bore/Stroke _____ 95.4 x 104.9 mm
 Horsepower ISO 9249 _____ 74.9 kW at 2000 min⁻¹
 Maximum torque ISO 9249 _____ 359 Nm at 1600 min⁻¹

Hydraulic system

Max oil flow _____ 2 x 129 l/min @ 2000 min⁻¹
 2 variable displacement axial piston pumps with regulating system
 Working circuit pressure _____
 Boom/Arm/Bucket _____ 34.3 MPa
 Boom/Arm/Bucket (with auto power up) _____ 36.3 MPa
 Swing circuit _____ 28.0 MPa
 Travel circuit _____ 34.3 MPa

Swing

Maximum swing speed _____ 10.6 min⁻¹

Travel

Travel motor _____ Fixed displacement axial piston motor
 Max travel speed _____ 5.6 km/h (Automatic travel speed shifting)
 Low travel speed _____ 3.4 km/h
 Gradeability _____ 70% (35°)
 Drawbar pull _____ 116 kN

Electrical system

Circuit _____ 24 V
 Alternator _____ 50 Amp

Undercarriage

Number of carriers rollers (each side) _____ 1
 Number of track rollers (each side) _____ 7
 Number of shoes (each side) _____ 43
 Type of shoe _____ Triple grouser shoe

Capacities

Fuel tank _____ 200 l
 Hydraulic system _____ 158 l
 Cooling system _____ 15.3 l

Weight and ground pressure

With 2.50 m Arm , 0.5 m³ bucket, operator, lubricant, coolant and full fuel tank and top guard OPG level 2

CX145C SR LC	Weight (kg)	Ground pressure (MPa)
600 mm grouser shoe	14.400	0.036

CX145C SR BLADE	Weight (kg)	Ground pressure (MPa)
600 mm grouser shoe	14.500	0.039

With 2.10 m Arm , 0.45 m³ bucket, operator, lubricant, coolant and full fuel tank and top guard OPG level 2

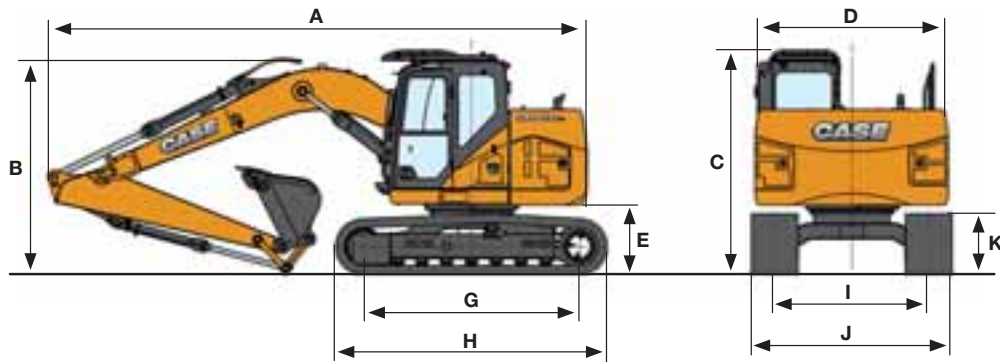
CX145C SR BLADE OFFSET BOOM	Weight (kg)	Ground pressure (MPa)
600 mm grouser shoe	15.200	0.041

CX C-SERIES HYDRAULIC EXCAVATORS

CX145C SR

TIER 4 INTERIM

General dimensions



CX145C SR LC

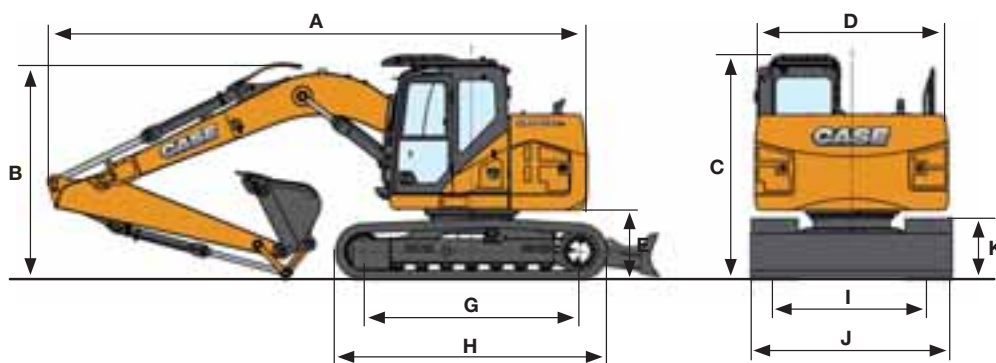
Arm 2.50 m

Arm 3.00 m

Arm 2.10 m

	Arm 2.50 m	Arm 3.00 m	Arm 2.10 m
Overall length (without attachment)	3500 mm	3500 mm	3500 mm
A Overall length (with attachment)	7220 mm	7180 mm	7210 mm
B Overall height (with attachment)	2900 mm	2900 mm	2900 mm
C Cab height	2900 mm	2900 mm	2900 mm
D Upper structure overall width	2490 mm	2490 mm	2490 mm
Swing (rear end) radius	1490 mm	1490 mm	1490 mm
E Clearance height under upper structure	880 mm	880 mm	880 mm
F Minimum ground clearance	440 mm	440 mm	440 mm
G Wheel base (Center to center of wheels)	2790 mm	2790 mm	2790 mm
H Crawler overall length	3500 mm	3500 mm	3500 mm
I Track gauge	1990 mm	1990 mm	1990 mm
J Undercarriage overall width (with 600 mm shoes)	2590 mm	2590 mm	2590 mm
K Crawler tracks height	790 mm	790 mm	790 mm

General dimensions



CX145C SR BLADE	Arm 2.50 m	Arm 3.00	Arm 2.10 m	OFFSET BOOM Arm 2.10 m
Overall length (without attachment)	4160 mm	4160 mm	4160 mm	4160 mm
A Overall length (with attachment)	7880 mm	7840 mm	7870 mm	7680 mm
B Overall height (with attachment)	2900 mm	2900 mm	2900 mm	2900 mm
C Cab height	2900 mm	2900 mm	2900 mm	2900 mm
D Upper structure overall width	2490 mm	2490 mm	2490 mm	2490 mm
Swing (rear end) radius	1490 mm	1490 mm	1490 mm	1490 mm
E Clearance height under upper structure	880 mm	880 mm	880 mm	880 mm
F Minimum ground clearance	440 mm	440 mm	440 mm	440 mm
G Wheel base (Center to center of wheels)	2790 mm	2790 mm	2790 mm	2790 mm
H Crawler overall length	3500 mm	3500 mm	3500 mm	3500 mm
I Track gauge	1990 mm	1990 mm	1990 mm	1990 mm
J Undercarriage overall width (with 600 mm shoes)	2590 mm	2590 mm	2590 mm	2590 mm
K Crawler tracks height	790 mm	790 mm	790 mm	790 mm

Blade dimensions and range

CX145C SR BLADE / OFFSET BOOM

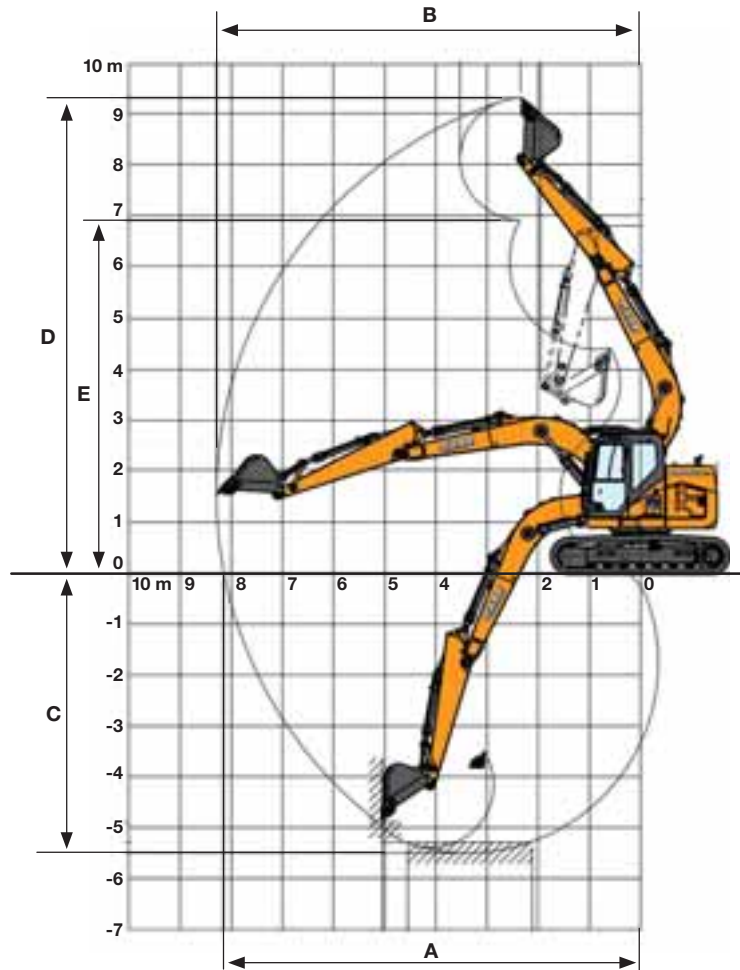
Blade dimensions (width x height)	2590 x 570 mm
Blade range (up/down)	510 x 520 mm

CX C-SERIES HYDRAULIC EXCAVATORS

CX145C SR

TIER 4 INTERIM

Performance data



CX145C SR LC/CX145C SR BLADE

Arm 2.50 m

Arm 3.00

Arm 2.10 m

OFFSET BOOM
Arm 2.10 m

Boom length	4630 mm	4630 mm	4630 mm	4500 mm
Bucket radius	1200 mm	1200 mm	1200 mm	1200 mm
Bucket wrist action	178 °	178 °	178 °	178 °
A Maximum reach at GRP	8140 mm	8600 mm	7780 mm	7430 mm
B Maximum reach	8290 mm	8740 mm	7940 mm	7590 mm
C Max. digging depth	5510 mm	6010 mm	5110 mm	4910 mm
D Max. digging height	9340 mm	9690 mm	9060 mm	8630 mm
E Max. dumping height	6940 mm	7290 mm	6660 mm	6250 mm

Digging force With 0.5 m³ bucket (ISO 6015)

CX145C SR LC/CX145C SR BLADE

Arm 2.50 m

Arm 3.00

Arm 2.10 m

OFFSET BOOM
Arm 2.10 m

Arm digging force	62 kN	56 kN	70 kN	59.5 kN
- with auto power up	66 kN	60 kN	74 kN	
Bucket digging force	90 kN	90 kN	90 kN	89.3 kN
- with auto power up	95 kN	95 kN	95 kN	

Lifting capacity

Front 360°	REACH											
	0 m	1.5 m	3.0 m	4.5 m	6.0 m	7.5 m	At max reach		m			

CX145C SR. LC. Standard arm. 2.50 m arm length, 0.50 m³ bucket, 600G shoes, max reach 8.29 m

7.5 m							2360 *	2360 *					1300*	1300*	5.24	
6.0 m							2960 *	2960 *	2320 *	2210			1100*	1100*	6.70	
4.5 m							3690 *	3510	2940 *	2170		1100*	1100*	1040*	1040*	7.52
3.0 m				7250*	6530	5260 *	3360	3360	2070	2280	1370		1040*	1040*	7.92	
1.5 m				9800*	5880	5190	3100	3220	1950	2230	1320		1110*	1110*	8.00	
0 m			2770 *	2770 *	8330*	5430	4960	2900	3110	1850	2180	1280	1240*	1200	7.77	
-1.5 m			5160 *	5160 *	9620*	5390	4860	2810	3060	1810			1500*	1360	7.22	
-3.0 m			8100 *	8100 *	7980*	5590	4890	2860	3100	1870			2060*	1720	6.26	
-4.5 m					4510*	4510*	2650 *	2650 *					2200*	2200*	4.69	

CX145C SR. LC. Short arm. 2.10 m arm length, 0.55 m³ bucket, 600G shoes, max reach 7.94 m

7.5 m							1980 *	1980 *					1600*	1600*	4.63
6.0 m							3200 *	3200 *	2180 *	2140			1330*	1330*	6.26
4.5 m				4580*	4580*	4370 *	3500	3330 *	2110				1250*	1250*	7.14
3.0 m				8030*	6420	5390	3270	3300	2020	1620*	1330		1250*	1250*	7.57
1.5 m				9970*	5660	5100	3020	3170	1900	2160*	1290		1320*	1240	7.65
0 m				7620*	5310	4980	2830	3070	1810				1470*	1280	7.41
-1.5 m			5590 *	5590 *	9320*	5370	4830	2790	3050	1790			1790*	1470	6.82
-3.0 m			8330 *	8330 *	7140*	5500	4840	2870					2500*	1940	5.80
-4.5 m					3060*	3060*							2240*	2240*	3.79

CX145C SR. LC. Long arm. 3.00 m arm length, 0.37 m³ bucket, 600G shoes, max reach 8.76 m

7.5 m							2340 *	2340 *					1270*	1270*	5.98
6.0 m							2750 *	2750 *	2290 *	2290			1110*	1110*	7.27
4.5 m							3070 *	3070	2730 *	2240	2000*	1460	1060*	1060*	8.02
3.0 m				4640*	4640*	4250 *	3440	3370 *	2120	2320	1410		1070*	1070*	8.40
1.5 m				8960*	6060	5270 *	3160	3260	1980	2250	1340		1130*	1060	8.47
0 m			2790 *	2790 *	9520*	5460	4980	2910	3130	1860	2190	1280	1250*	1080	8.26
-1.5 m	3860 *	3860*	4690 *	4690 *	9350*	5300	4830	2780	3050	1790	2160	1260	1480*	1200	7.74
-3.0 m	5020 *	5020*	6880 *	6880 *	8720*	5370	4840	2810	3070	1810			1950*	1470	6.85
-4.5 m			9040 *	9040 *	5870*	5440	3900 *	2900					2370*	2160	5.44

* Hydraulic capacity 87%

CX C-SERIES HYDRAULIC EXCAVATORS

CX145C SR

TIER 4 INTERIM

Lifting capacity

Front 360°	REACH													
	0 m		1.5 m		3.0 m		4.5 m		6.0 m		7.5 m		At max reach	

CX145C SR. BLADE DOWN. Standard arm. 2.50 m arm length, 0.50 m³ bucket, 600G shoes, max reach 8.29 m

7.5 m							2360*	2360*					1300*	1300*	5.24
6.0 m							2960*	2960*	2320*	2270			1100*	1100*	6.70
4.5 m							3690*	3590	2940*	2230	1100*	1100*	1040*	1040*	7.52
3.0 m				7250*	6760	5260*	3450	3870*	2130	2310*	1410	1040*	1040*	7.92	
1.5 m				9800*	6100	6330*	3190	4730*	2000	2770*	1360	1110*	1110*	8.00	
0 m			2770*	2770*	8330*	5650	6740*	2980	4870*	1900	2480	1310	1240*	1240	7.77
-1.5 m			5160*	5160*	9620*	5610	6520*	2900	4640*	1860			1500*	1390	7.22
-3.0 m			8100*	8100*	7980*	5710	5470*	2950	3510*	1920			2060*	1770	6.26
-4.5 m					4510*	4510*	2650*	2650*					2200*	2200*	4.69

CX145C SR. BLADE DOWN. Short arm. 2.10 m arm length, 0.55 m³ bucket, 600G shoes, max reach 7.94 m

7.5 m							1980*	1980*					1600*	1600*	4.63
6.0 m							3200*	3200*	2180*	2180*			1330*	1330*	6.26
4.5 m				4580*	4580*	4370*	3590	3330*	2170				1250*	1250*	7.14
3.0 m				8030*	6660	5440*	3360	4400*	2070	1620*	1360	1250*	1250*	7.57	
1.5 m				9970*	5890	6480*	3110	4780*	1950	2160*	1320	1320*	1270	7.65	
0 m				7620*	5530	6700*	2920	4830*	1860			1470*	1320	7.41	
-1.5 m			5590*	5590*	9320*	5590	6310*	2880	4430*	1840			1790*	1510	6.82
-3.0 m			8330*	8330*	7140*	5710	4960*	2960					2500*	1990	5.80
-4.5 m					3060*	3060*							2240*	2240*	3.79

CX145C SR. BLADE DOWN. Long arm. 3.00 m arm length, 0.37 m³ bucket, 600G shoes, max reach 8.76 m

7.5 m							2340*	2340*					1270*	1270*	5.98
6.0 m							2750*	2750*	2290*	2290*			1110*	1110*	7.27
4.5 m							3070*	3070*	2730*	2290	2000*	1420	1060*	1060	8.02
3.0 m				4640*	4640*	4250*	3530	3510*	2180	2570*	1450	1070*	1070*	8.40	
1.5 m				8960*	6300	6020*	3260	4580*	2040	3080*	1380	1130*	1090	8.47	
0 m			2790*	2790*	9520*	5680	6660*	3000	4840*	1910	3310*	1320	1250*	1110	8.26
-1.5 m	3860*	3860*	4690*	4690*	9350*	5520	6610*	2870	4750*	1840	2470*	1300	1480*	1230	7.74
-3.0 m	5020*	5020*	6880*	6880*	8720*	5590	5880*	2890	4060*	1870			1950*	1510	6.85
-4.5 m			9040*	9040*	5870*	5630	3900*	2980*					2370*	2220	5.44

* Hydraulic capacity 87%

Lifting capacity

Front 360°	REACH													
	0 m	1.5 m	3.0 m	4.5 m	6.0 m	7.5 m	At max reach		m					

CX145C SR. BLADE UP. Standard arm. 2.50 m arm length, 0.50 m³ bucket, 600G shoes, max reach 8.29 m

7.5 m								2360 *	2360 *					1300*	1300*	5.24	
6.0 m								2960 *	2960 *	2320 *	2150			1100*	1100*	6.70	
4.5 m								3690 *	3430	2840	2110	1100*	1100*	1040*	1040*	7.52	
3.0 m					7250*	6380	4470	3260	2730	2010	1840	1320	1040*	1040*	7.92		
1.5 m					8560	5710	4190	3010	2610	1890	1780	1270	1110*	1110*	8.00		
0 m					2770 *	2770 *	7950	5260	3970	2800	2500	1780	1740	1230	1240*	1150	7.77
-1.5 m					5160 *	5160 *	7960	5220	3870	2720	2450	1740			1500*	1300	7.22
-3.0 m					8100 *	8100 *	7920	5330	3920	2770	2510	1800			2060*	1660	6.26
-4.5 m							4510*	4510*	2650 *	2650 *					2200*	2200*	4.69

CX145C SR. BLADE UP. Short arm. 2.10 m arm length, 0.55 m³ bucket, 600G shoes, max reach 7.94 m

7.5 m								1980 *	1980 *					1600*	1600*	4.63	
6.0 m								3200 *	3200 *	2180 *	2070			1330*	1330*	6.26	
4.5 m					4580*	4580*	4370 *	3400	2780	2050				1250*	1250*	7.14	
3.0 m					8030*	6250	4380	3170	2680	1950	1620*	1270	1250*	1250	7.57		
1.5 m					8300	5490	4100	2920	2550	1840	1740	1230	1320*	1190	7.65		
0 m					7620*	5150	3900	2740	3460	1750				1470*	1230	7.41	
-1.5 m					5590 *	5590 *	7940	5210	3850	2690	2440	1730			1790*	1410	6.82
-3.0 m					8330 *	8330 *	7140*	5340	3930	2780					2500*	1870	5.80
-4.5 m							3060*	3060*							2240*	2240*	3.79

CX145C SR. BLADE UP. Long arm. 3.00 m arm length, 0.37 m³ bucket, 600G shoes, max reach 8.76 m

7.5 m								2340 *	2340 *					1270*	1270*	5.98	
6.0 m								2750 *	2750 *	2290 *	2230			1110*	1110*	7.27	
4.5 m								3070 *	3070 *	2730 *	2170	1930	1410	1060*	1060*	8.02	
3.0 m					4640*	4640*	4250 *	3350	2790	2060	1870	1360	1070*	1060	8.40		
1.5 m					8780	5890	4270	3070	2640	1920	1800	1290	1130*	1010	8.47		
0 m					2790 *	2790 *	8060	5290	3990	2820	2510	1790	1740	1230	1250*	1040	8.26
-1.5 m	3860 *	3860*	4690 *	4690 *	7830	5140	3850	2690	2430	1720	1720	1210	1480*	1150	7.74		
-3.0 m	5020 *	5020*	6880 *	6880 *	7900	5210	3860	2710	2460	1750				1950*	1420	6.85	
-4.5 m					9040 *	9040 *	5870*	5280	3880	2810					2370*	2080	5.44

Standard Equipment

ENGINE

Isuzu 4-cylinder turbodiesel in line
 Certified Tier 4 interim (CEGR)
 Electronic fuel injection
 High pressure common rail system
 Variable turbo charger
 Air cooled Intercooler
 Exhaust gas recirculation
 Diesel Particulate Diffuser (DPD)
 Neutral safety start
 Auto-engine warm up, emergency stop
 Glow-plug pre-heat
 Idle System:
 Auto-idle
 One-touch idle
 Idle shut-down
 EPF (Engine Protection Feature)
 Dual-stage fuel filtration
 Dual element air filter
 Remote oil filter
 Green plug oil drain
 500-hour engine oil change interval
 Refuelling Pump

HYDRAULICS

Auto power boost
 Auto swing priority
 Auto travel speed change
 Selectable work modes

Overload warning device
 SWC - SWING RELIEF CONTROL
 SSC - SPOOL STROKE CONTROL
 BEC - BOOM ECONOMY CONTROL
 AEC - AUTO ECONOMY CONTROL
 SEC - SWING ECONOMY CONTROL
 ISO pattern controls
 Pre-set auxiliary pump settings
 Switch controlled auxiliary selection
 Auxiliary valve
 Auxiliary pipe brackets
 5,000 hour hydraulic oil change interval
 1,000 hour hydraulic filter change interval
 Hydraulic track adjustment
 SAHR brake

UPPERSTRUCTURE

Isolation mounted cab (fluid and spring)
 Common key vandal locks
 Swivel guard belly pan
 Rear view safety camera

ATTACHMENT

Standard boom 4.63m
 Arm 2.50m
 Bucket linkage with hook
 Boom mounted work light (70 watt)
 Auxiliary pipe brackets

Centralized lube bank
 Attachment cushion valve
 Arm and boom regeneration
 Arm and boom hose burst check valves

OPERATOR STATION

ROPS/FOPS level 1 cab
 FOPS guard OPG level II on cab roof
 Pressurized cab
 Tempered safety glass
 One-touch lock front window
 Sun visor & rain deflector
 AC/heat/defrost w/ auto climate control
 Cup holder & ashtray
 Interior dome light
 Cloth covered air-suspension seat
 Seat-belt
 Adjustable armrests
 Low-effort controls (short)
 Radio mute switch on control lever
 2 speakers for radio
 Controls pre-wired for auxiliary
 Auxiliary select system
 Straight travel
 Aux-in port for personal electronics
 Multifunction color monitor
 Rear-view camera
 Anti-theft system (start code)

system)
 Rubber floor mat
 12-volt electric socket
 24-volt cigarette lighter
 One-piece right hand window
 2 internal & 3 external view mirrors
 2 working lights (boom & upperstructure)
 2 cab top working lights
 Windshield wiper / washer
 Clear (Lexan) roof window w/ sunshade
 Storage compartments
 On-board diagnostic system
 Travel alarm with cancel switch

UNDERCARRIAGE

600 mm steel shoes, triple semigrouser
 Full overlap turntable bearing tub
 Single track guide

Options

HYDRAULICS

Auxiliary Hydraulics -
 Single acting pedal activated breaker circuit
 Pedal-activated multifunction circuit
 Pedal activated low-flow circuit

ATTACHMENT

Arm - 2.10 m / 3 m
 Hydr. or mech quickcoupler
 Buckets: Extreme / Heavy duty / GP / ditching
 Hammers, shears, grapples

OPERATOR STATION

Front cab guard - vertical bars (OPG level 2)

Front cab guard - vertical bars (OPG level 1)
 Front mesh screen
 AM/FM radio w/ antenna and Side-view camera

UPPERSTRUCTURE

Auto centralized greasing system
 Rubber bumper guard (order through Service Parts)

UNDERCARRIAGE

Steel shoes, triple semi-grouser
 500 mm, 600mm, 700mm.
 500mm Rubber link tracks
 Double track guide

Standard and optional equipment shown can vary by country.

Worldwide Case Construction Equipment Contact Information

EUROPE:

via Plava, 80
 10135 TORINO - ITALIA

AFRICA/MIDDLE EAST/CIS:

Riva Paradiso 14
 6902 Paradiso - SWITZERLAND

NORTH AMERICA/MEXICO:

700 State Street
 Racine, WI 53404 U.S.A.

LATIN AMERICA:

Av. General David Sarnoff 2237
 32210 - 900 Contagem - MG
 Belo Horizonte BRAZIL

ASIA PACIFIC:

Unit 1 - 1 Foundation Place - Prospect
 New South Wales - 2148 AUSTRALIA

CHINA:

No. 29, Industrial Premises, No. 376.
 De Bao Road, Waigaoqiao Ftz, Pudong,
 SHANGHAI, 200131, P.R.C.

CASE Construction Equipment

CNH UK Ltd
 Unit 4,
 Hayfield Lane Business Park,
 Field Lane, Auckland,
 Doncaster,
 DN9 3FL
 Tel. 00800-2273-7373
 Fax +44 1302 802829

CASE Customer Assistance
00800-2273-7373

The call is free from a land line. Check in advance with your Mobile Operator if you will be charged.



NOTE: Standard and optional fittings can vary according to the demands and specific regulations of each country. The illustrations may include optional rather than standard fittings - consult your Case dealer. Furthermore, CNH reserves the right to modify machine specifications without incurring any obligation relating to such changes.

Conforms to directive 2006/42/CE

